

New York State Agricultural Experiment Station Geneva, New York

Computer Centre: ref 231 (replaces 192) / 17.11.92



Direct access to Internet computers is available from network-connected Macintosh® computers at Geneva. This document discusses NCSA Telnet, an ASCII computer-oriented emulator.

Note that the programme Comet (see CC183) is more suitable for accessing IBM mainframes such as CornellC and CornellF.

Installation

NCSA Telnet is installed when you install Cornell's *Bear Access* package. See cc227 for details on installing Bear Access at Geneva. Startup documents for Geneva hosts can be obtained from the Computer Centre File Server.

Usage

Double-click on one of the preconfigured startup documents; for example *Prime.telnet*. You will be connected to the specified host. To access other systems, you must create a new configuration document with the appropriate internet address; call 289 if you need help with this.

Login and general usage of host computers

Login to the selected computer using procedures appropriate to that machine. For instance, to get on the Prime computer type

```
login username
```

where username is your assigned user identification.

Note that the scrollbar is active. The session may be reviewed and selectively printed by means of **Print Selection...** under the **File** menu

File transfers

NCSA Telnet supports standard FTP for file transfers. Make sure that **FTP Enable** under the **File** menu is checked. FTP syntax is dependent to a varying extent on the host computer, but typically, FTP will be started by typing

```
ftp ⌘-i
```

followed by a return. Note that the ⌘ and i keys must be pressed simultaneously and will result in the current IP address of your Macintosh being 'filled in'. Once FTP has started, you will get a username prompt:

```
FTP is connecting to remote host: 132.236.2.42
```

```
220 Macintosh Resident FTP server, ready
```

```
Remote host connected.
```

```
Username (132.236.2.42:g1):
```

If you have no password file (see below) then just press return.

You may transfer a text file *to* your Macintosh *from* the host computer by typing

```
put filename
```

To transfer a text file *to* the host computer *from* your Macintosh type

```
get filename
```

If a Macintosh programme or non-text document is to be transferred, type `binary` and turn on **MacBinary Enable** under the **File** menu before 'putting' or 'getting' the file.

Passwords

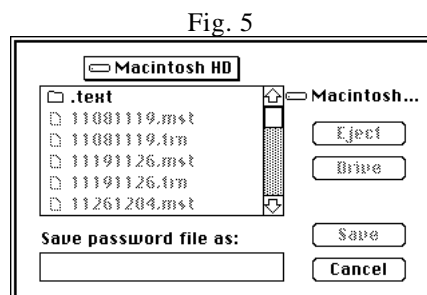
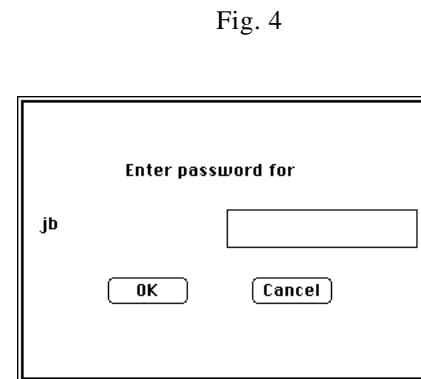
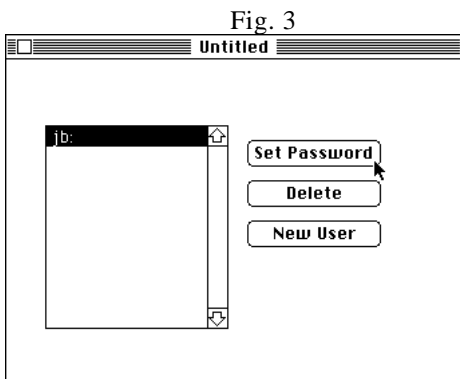
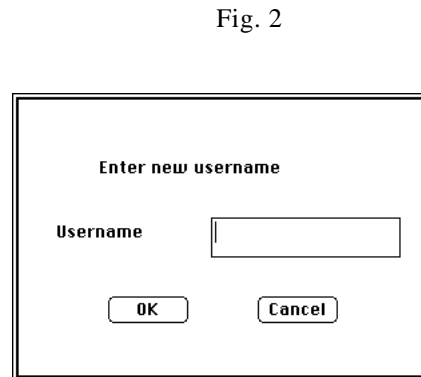
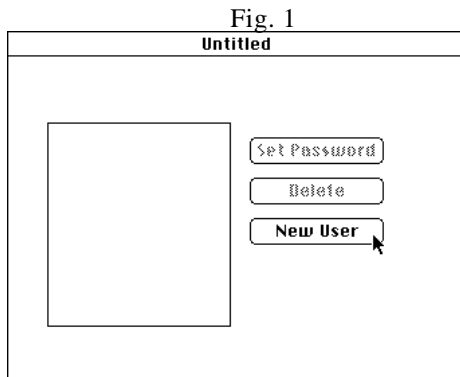
When NCSA is running as an FTP server and no password is in place, anyone can log into your Macintosh and copy files. If this concerns you, set a password on FTP using the *telpass* programme which comes with NCSA Telnet.

1. Edit *config.tel* in the NCSA Telnet folder. Find the line

```
#passfile="ftppass" # name of file to find FTP passwords in (System Folder)
```

and remove the first #. Make sure to save as **Text Only** if editing with Microsoft Word.

2. Open *telpass*, you will get a dialogue (Fig. 1)



3. Click **New User**, enter a user name (of your choice) into the next dialogue (Fig. 2) and click **OK**.
4. Click on the user name which is now displayed in the selection box, click **Set Password** in the dialogue (Fig. 3), enter a password (Fig. 4), and click **OK**.
5. Click on the close box and save the password file as `ftppass` (Fig. 5). You are now password protected.

Graphics capabilities

NCSA performs Tektronix[®] 4014 emulation and is suitable for working with SAS[®] GRAPH and other graphics programmes. Usage is straightforward. The main points are as follows:

Tektronix emulation automatically becomes active when the host computer sends a 'Tektronix clear screen' command: a graphics window is opened.

You may copy the contents of the graphics window by clicking on it and then choosing **Copy** from the **Edit** menu.

You may print the contents of the graphics window by clicking on it and then choosing **Print Selection** from the **File** menu. To get best resolution set the **Reduce or Enlarge** option in **Page Setup...** to 25%.

You may zoom part of a graphic by dragging a selection rectangle around it. When the mouse button is released, the selected area will expand to fill the window. To unzoom, double click in the window.