

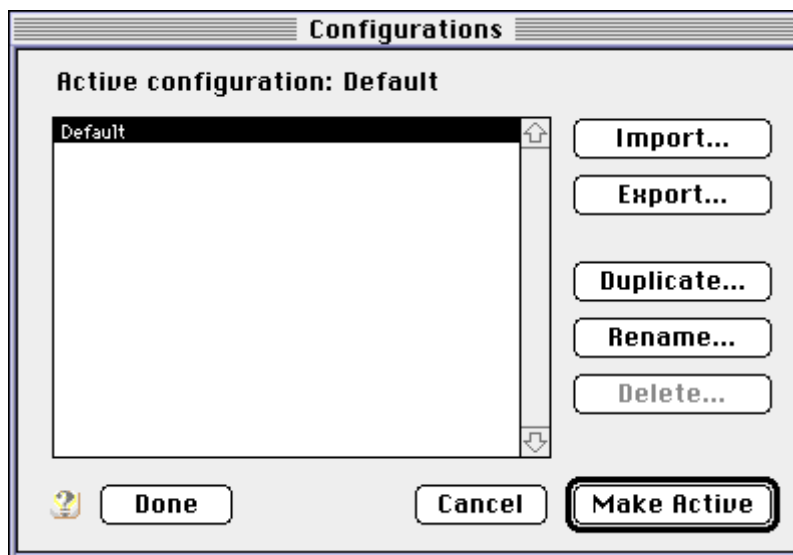
**New York State Agricultural Experiment Station
Geneva, New York**

Computer Centre: 349/ 2-May-97

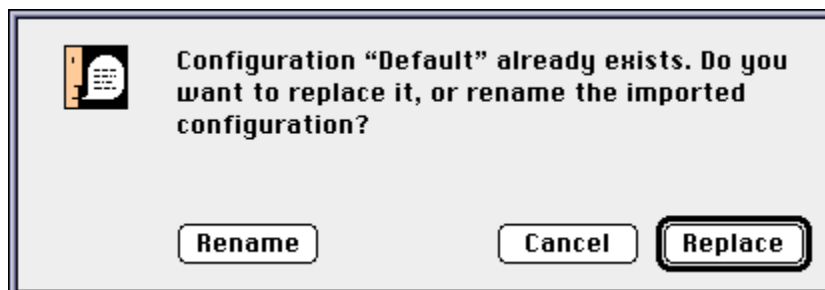
Configuring TCP/IP

This note applies only to MacOS machines running Open Transport. If your machine uses MacTCP, consult cc311.

1. Connect to the Station AppleShare server AES.Geneva:Computer Centre
2. Open the **TCP/IP** control panel.
3. Select **Configurations...** from the **File** menu.

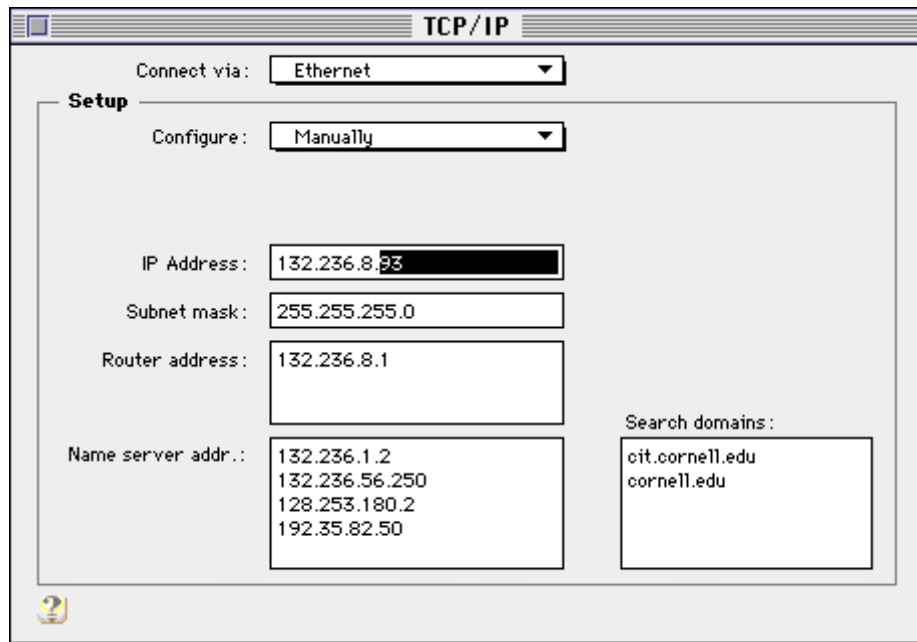


4. Click the **Import...** button.
5. Locate and double-click on the appropriate TCP/IP import file. It can be found on the server in the folder Software:Communications:TCP/IP-Ethernet, and is named *Zone* where *Zone* is the AppleTalk zone in which you are located.
6. You will get the following dialogue:



Click **Replace**

7. Click the **Done** button in the Configurations window.
8. Insert the correct node number in the IP Address. In the following example a node number of 93 was inserted



9. Close the TCP/IP window and when asked if it is OK, tell TCP/IP to save the changes.