

## New York State Agricultural Experiment Station Geneva, New York

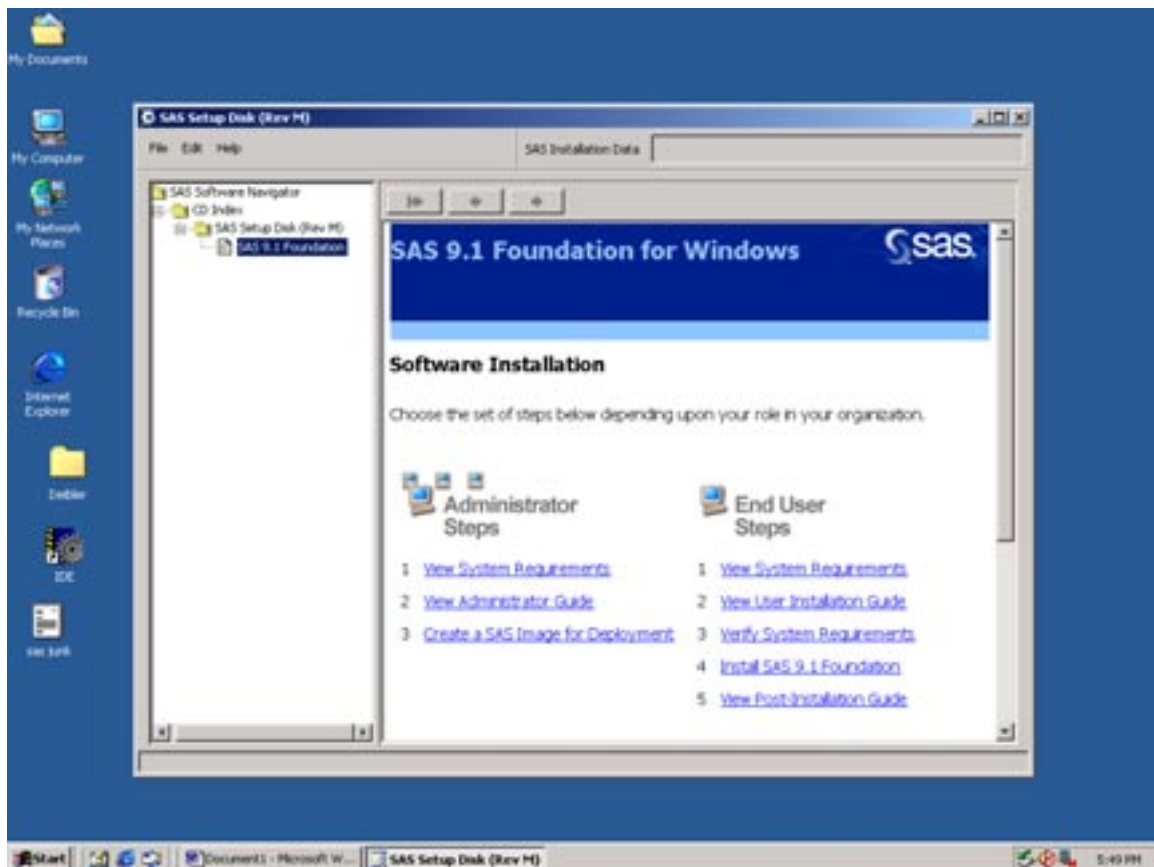
Computer Centre: 412/ 30-Sep-04

### Installing SAS® on Windows

*This software is licensed to Cornell University and its use is strictly limited to Cornell faculty, staff, and students at the main campus and affiliate locations.*

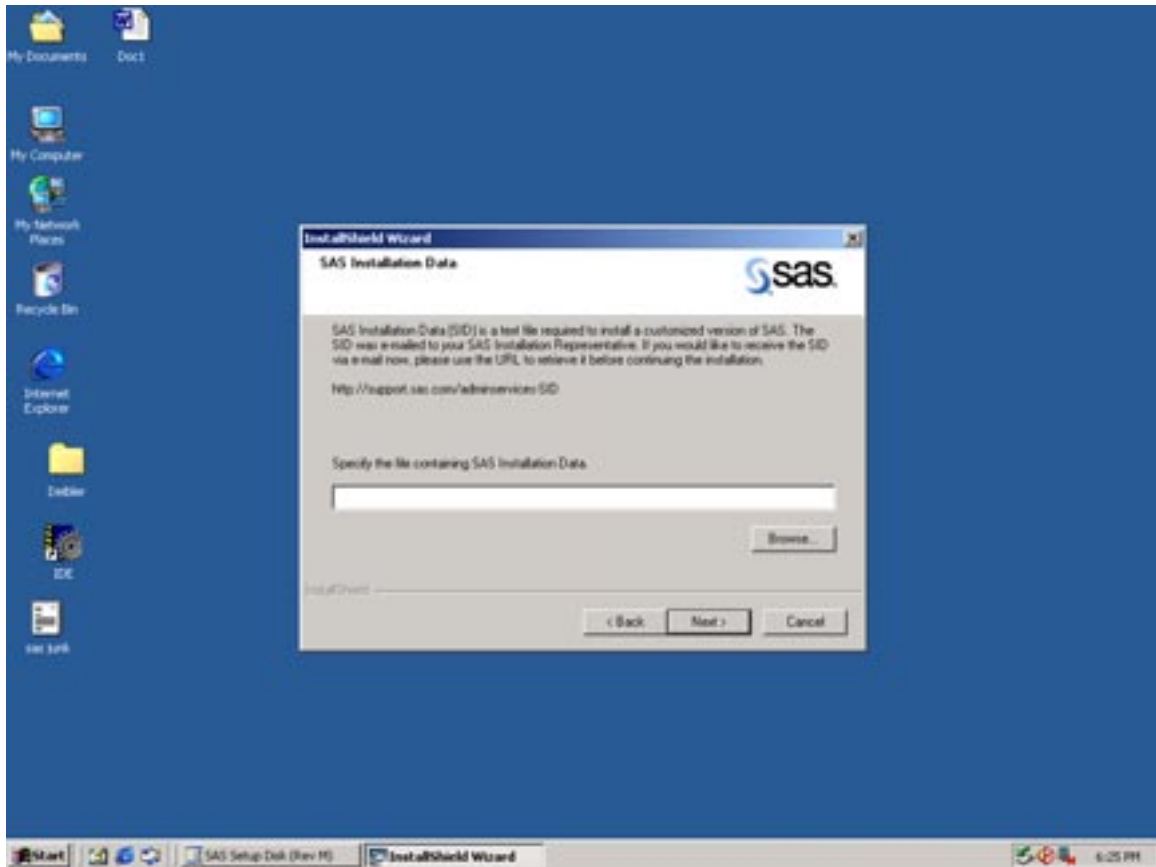
#### **Ordering and installation**

1. Order at [www.cit.cornell.edu/software/licenses/sas.html](http://www.cit.cornell.edu/software/licenses/sas.html) and arrange to pay the licensing fee.
2. On completion of the order, a confirming e-mail will be sent to you. Provide a copy of this to the Geneva Computer Centre and the installation disks will be loaned to you.
3. You may need to install a Microsoft® Service Pack [Service Pack 1 for Windows XP Professional, Service Pack 3 for Windows 2000 Professional].
4. Insert the Setup CD and follow the prompts. In particular follow the column under 'End User Steps'.



The complete SAS installation is very large (~5 GB). To minimise wasting disk space you may want to consider limiting installation to the components that you will use – often just Base/SAS, SAS/STAT and SAS/GRAPH.

During installation, you will be asked for 'SAS installation Data'. For Geneva users, this information is supplied on a separate disk marked *Setinit*. When prompted, insert the disk and use the Browse button to locate the file thereon. Once the data is applied, SAS will continue to install.



### **Documentation**

Note that the online documentation can be installed separately. SAS will not ask for it during the primary installation.