

## Anthracnose

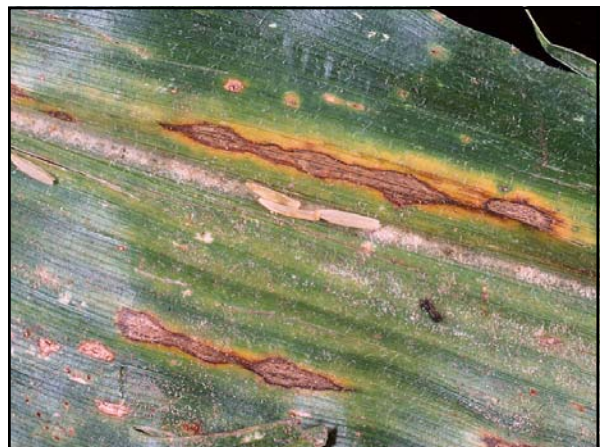
*Colletotrichum graminicola*



The fungus causes anthracnose **leaf blight** and anthracnose **stalk rot**. The symptoms of leaf blight vary greatly. The first symptoms are small oval to elongate water-soaked spots on the leaves which may become tan at the center.



The lesions are usually surrounded by a **border** that can be yellow, to red, to brown in color. The disease develops best on older tissue, usually the lower leaves. Small black dots (fruiting bodies or **acervuli**) may develop on the dead tissue.



Anthracnose **stalk rot** may occur at any stage of growth. The internal stalk tissues are often blackened or discolored, and the stalk can be easily crushed with your hands.

### **Disease development**

- Fungus overwinters on corn residues
- Spores from debris are carried by wind or splashing rain to leaves
- Anthracnose is favored by high temperatures and extended periods of cloudy, wet weather.
- Minimal stalk damage by European corn borers predisposes corn to stalk rot

### **Management**

- Practice crop rotation - consecutive plantings of corn (sweet or field) at risk
- Incorporate corn residues
- Select tolerant varieties
- Control European corn borers on corn
- Fungicides are not necessary

